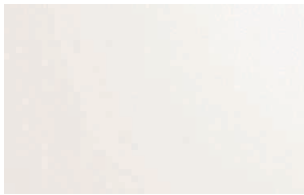


## Colorcoat® LG

Pre-finished steel for roof and wall cladding



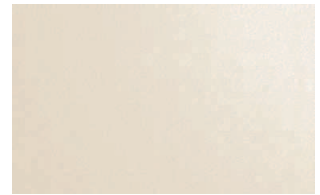
White **CD1** 00E55



Goosewing Grey **CD1** 10A05



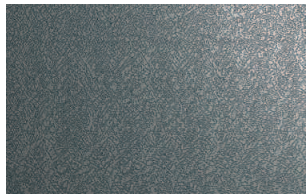
Meadowland **CD1** 12B17



Hamlet **CD1** RAL 9002



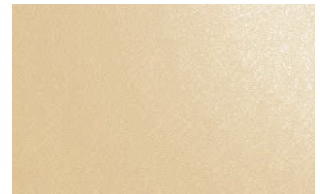
Albatross **CD1** 18B17



Merlin Grey **CD1** 18B25



Moorland Green **CD1** 12B21



Honesty **CD1** 10C31



Wedgewood Blue **CD1** 18C37



Raven **CD2** 18B29



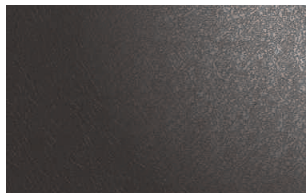
Heritage Green **CD2** RAL 6002



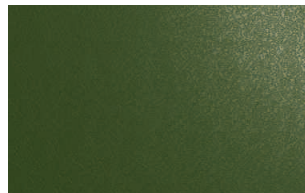
Mushroom **CD1** 10B19



Ocean Blue **CD2** 18C39



Anthracite **CD2** RAL7016



Olive Green **CD1** 12B27



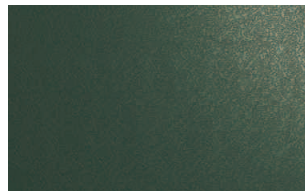
Terracotta **CD2** 04C39



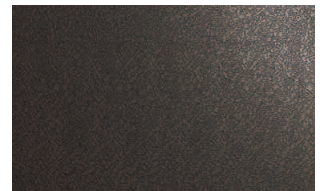
Sargasso **CD2** RAL 5003



Black **CD1** 00E53



Juniper Green **CD2** 12B29



Vandyke Brown **CD2** 08B29

### Notes

1. The standard colour references shown above are the nearest equivalents.
2. The printed colours shown for Colorcoat® LG are for guidance only. For a true representation of colour and effect, please obtain product samples from the Colorcoat Connection® helpline.
3. If an exact match between components and Colorcoat® LG is essential, this is best achieved by matching to the actual cladding delivered to site.

# Colorcoat® LG

Available from Tata Steel, Colorcoat® LG is a leathergrain embossed plastisol product suitable for roof and wall cladding systems where good performance is required at a competitive price.

- 200µm durable, abrasion-resistant topcoat.
- Available in the most popular colours in standard sizes.
- Galvanised substrate to BS EN 10346:2015 offering good corrosion resistance.
- Available with a performance guarantee up to 25 years including factory cut edges.
- High performance reverse side backing coat as standard.
- Manufactured in the UK by Tata Steel, who have a proven track record in pre-finished steel.
- Fully REACH compliant and free of chromates.

## Colorcoat® reassurance

The Colorcoat® brand provides the recognised mark of quality and expertise from Tata Steel. Encompassing over 50 years of innovation, strict testing procedures and manufacturing excellence, Colorcoat® provides a range of pre-finished steel products which have been used on countless projects worldwide.

## Product performance

Colorcoat® LG is carefully manufactured in a controlled process to ensure consistent quality.

The use of Colorcoat® LG in aggressive environments including roofs where a photovoltaic (PV) frame module might be installed is not recommended. For optimum levels of performance including roofs where PV modules might be installed, always specify Colorcoat HPS200 Ultra® supported by the Confidex® Guarantee.

## Guarantee periods

Colorcoat® LG comes with a performance guarantee of up to 25 years, including factory cut edges. This is made available through the cladding system manufacturer or distributor. Owing to the likelihood of an aggressive micro-environment being generated under a photovoltaic array, the Colorcoat® LG guarantee would not apply.

### Tata Steel

Shotton Works, Deeside, Flintshire,  
CH5 2NH. United Kingdom  
T: +44 (0) 1244 812345

### Colorcoat Connection® helpline

T: +44 (0) 1244 892434  
E: colorcoat.connection@tatasteel.com

Tata Steel UK Limited is registered in England under number 2280000 with registered office at 30 Millbank, London, SW1P 4WY.

## Colorcoat® LG guarantee cover

Colour Band	Inland		Coastal	
	Walls	Roofs	Walls	Roofs
CD1	25 years	25 years	20 years	20 years
CD2	20 years	15 years	15 years	10 years

### Notes

1. Guarantee periods quoted are applicable to UK and Ireland only.
2. Figures under coastal heading are buildings within 2km of the sea.
3. Full terms and conditions of the Colorcoat® LG guarantee are on the reverse of the guarantee application form available from Colorcoat® supply chain partners.

## Product testing

To ensure the integrity of Colorcoat® products, Tata Steel uses laboratory tests to measure their performance against corrosion, effect of sunlight, chemicals and abrasion. All testing of products is carried out in accredited laboratories to international standards.

## Typical properties

Colorcoat® LG	Test standard		
Nominal organic coating thickness	(µm)	200	EN13523-1
Gloss (60°)	(%)	15-35	EN13523-2
Scratch resistance	(g)	> 3500	EN13523-12
Abrasion resistance (Taber, 250 rev, 1 kg)	(mg)	< 12	EN13523-16
Flexibility: Reverse impact	(J)	≥ 18	EN13523-5
Adhesion (cross hatch)	(%)	100 Pass	EN13523-6
Minimum bend radius	(T)	0 T@16°C	EN13523-7
Corrosion resistance: Salt spray	(h)	1000	EN13523-8
Humidity	(h)	1000	EN13523-25
Max. continuous operating temp.	(°C)	60	Tata Steel
Reaction to fire		Class 0	BS476 part 6 & 7
Resistance to fire		Class AA	BS476 part 3

### General notes

The figures contained in this table are typical properties for solid colours and do not constitute a specification. Tata Steel can also provide fire performance data to European Classification standards. These figures relate to the topcoat. For details of test methods see [www.colorcoat-online.com](http://www.colorcoat-online.com)

# www.colorcoat-online.com

### Trademarks of Tata Steel UK Limited

Albatross, Colorcoat, Colorcoat Connection, Colorcoat HPS200 Ultra, Confidex, Hamlet, Heritage Green, Honesty, Meadowland and Sargasso are registered trademarks of Tata Steel UK Limited.

While care has been taken to ensure that the information contained in this publication is accurate, neither Tata Steel, nor its subsidiaries, accept responsibility or liability for errors or for information which is found to be misleading.

Before using products or services supplied or manufactured by Tata Steel and its subsidiaries, customers should satisfy themselves as to their suitability.

Copyright 2017 Tata Steel  
Language English 1217