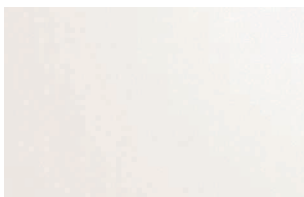


Colorcoat® GP

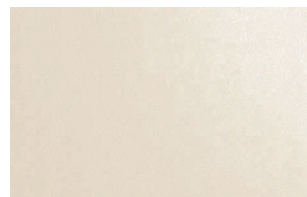
The economic pre-finished steel for UK and Ireland roof and wall profile applications



White **CD1** 00E55



Goosewing Grey **CD1** 10A05



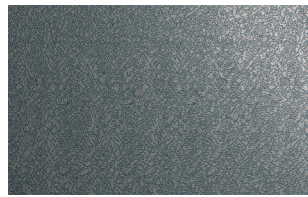
Hamlet **CD1** RAL 9002



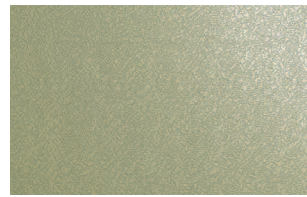
Albatross **CD1** 18B17



Anthracite **CD1** RAL 7016



Merlin Grey **CD1** 18B25



Moorland Green **CD1** 12B21



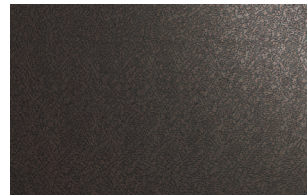
Olive Green **CD1** 12B27



Black **CD1** 00E53



Juniper Green **CD2** 12B29



Vandyke Brown **CD2** 08B29



Raven **CD2** 18B29



Ocean Blue **CD2** 18C39

Notes

1. The standard colour references shown above are the nearest equivalents.
2. The printed colours shown for Colorcoat® GP are for guidance only.

Colorcoat® GP

Colorcoat® GP is an economic plastisol product suitable for use in UK and Ireland roof and wall single skin and built-up profile applications.

- 200µm durable and wear-resistant product.
- Only available in leathergrain emboss.
- Available in 13 standard colours in standard sizes.
- Identifiable reverse side backing coat.
- Galvanised substrate to BS EN 10346:2015 offering good corrosion resistance.
- Fully REACH compliant and free of chromates.
- Manufactured in the UK by Tata Steel, who have a proven track record in pre-finished steel.

Colorcoat® reassurance

The Colorcoat® brand provides the recognised mark of quality and expertise from Tata Steel. Encompassing over 50 years of innovation, strict testing procedures and manufacturing excellence, Colorcoat® provides a range of pre-finished steel products which have been used on countless projects worldwide.

Product performance

Colorcoat® GP is carefully manufactured in a controlled process to ensure consistent quality. The use of Colorcoat® GP in aggressive environments is not recommended.

Tata Steel has a range of Colorcoat® products suitable for different environments and applications.

For increased levels of performance consider Colorcoat® LG which comes with a performance guarantee of up to 25 years, including factory cut edges.

Product testing

To ensure the integrity of Colorcoat® products, Tata Steel uses laboratory tests to measure their performance against corrosion, effect of sunlight, chemicals and abrasion. All testing of products is carried out in specialised laboratories to international standards.

Guarantee periods

A functional guarantee of up to 25 years including 10 years factory cut edges. Available for external roof and wall single skin and built up profile applications in inland environments (more than 3km from the coast) on a request basis through the profile manufacturer. This is for the 13 standard colours for UK and Ireland (flashings excluded). Excludes individual domestic residential applications. See full terms and conditions.

Tata Steel



Shotton Works, Deeside,
Flintshire, CH5 2NH.
United Kingdom
T: +44 (0) 1244 812345

Colorcoat Connection® helpline

T: +44 (0) 1244 892434
E: colorcoat.connection@tatasteleurope.com

Tata Steel UK Limited is registered in England under number 2280000 with registered office at 18 Grosvenor Place, London, SW1X 7HS.

Colorcoat® GP guarantee cover

Colour Band	Walls	Roofs
CD1 	25 years	25 years
CD2 	20 years	15 years

The guarantee now covers the use of Colorcoat® GP under photovoltaic (PV) frame modules on a new roof or wall and provides confidence that installing a PV array will not have a detrimental effect on the performance of the pre-finished steel.

The guarantee allows PV frame modules to be installed at any point throughout the guarantee period ensuring the building will still be covered for the remainder of the guarantee duration.

For more information and terms and conditions, including the new PV addendum please contact the profile manufacturer or distributor.

Typical properties

Colorcoat® GP			Test standard
Nominal organic coating thickness	(µm)*	200	EN 13523-1
Gloss (60°)	(%)	15-35	EN 13523-2
Scratch resistance	(g)	> 3500	EN 13523-12
Abrasion resistance (Taber, CS10 2x1kg, 250 Rev.)	(mg)	< 12	EN 13523-16
Flexibility: Reverse impact	(J)	≥ 18	EN 13523-5
Adhesion (cross hatch)	(%)	100 Pass	EN 13523-6
Minimum bend radius	(T)	0T@16°C	EN 13523-7
Corrosion resistance:	Salt spray (h)	1000	EN 13523-8
	Humidity (h)	1000	EN 13523-26
Max. continuous operating temp.	(°C)	60	Tata Steel
Reaction to fire		Class C-s2,d0 [†]	EN13501-1
Fire performance of roof coverings		B _{ROOF} (t4) ^{††}	EN13501-5
		CWFT B _{ROOF} (t1,2,3) ^{†††}	CWFT 2005/403/EC

*µm = micron

General notes

The figures contained in this table are typical properties and do not constitute a specification. These figures relate to the topcoat. For details on test methods see www.colorcoat-online.com

† Valid for all gauges ≥ 0.46mm and all standard colours for single sided product.

†† Valid for all gauges ≥ 0.4mm and all standard colours for single sided product.

††† Valid for all gauges ≥ 0.4mm and all standard colours for single sided product.

www.colorcoat-online.com

Trademarks of Tata Steel UK Limited

Albatross, Colorcoat, Colorcoat Connection and Hamlet are registered trademarks of Tata Steel UK Limited.

While care has been taken to ensure that the information contained in this publication is accurate, neither Tata Steel, nor its subsidiaries, accept responsibility or liability for errors or for information which is found to be misleading.

Before using products or services supplied or manufactured by Tata Steel and its subsidiaries, customers should satisfy themselves as to their suitability.



Scan for the latest version of this literature.

Copyright 2023 Tata Steel UK Limited
Language English UK 1023